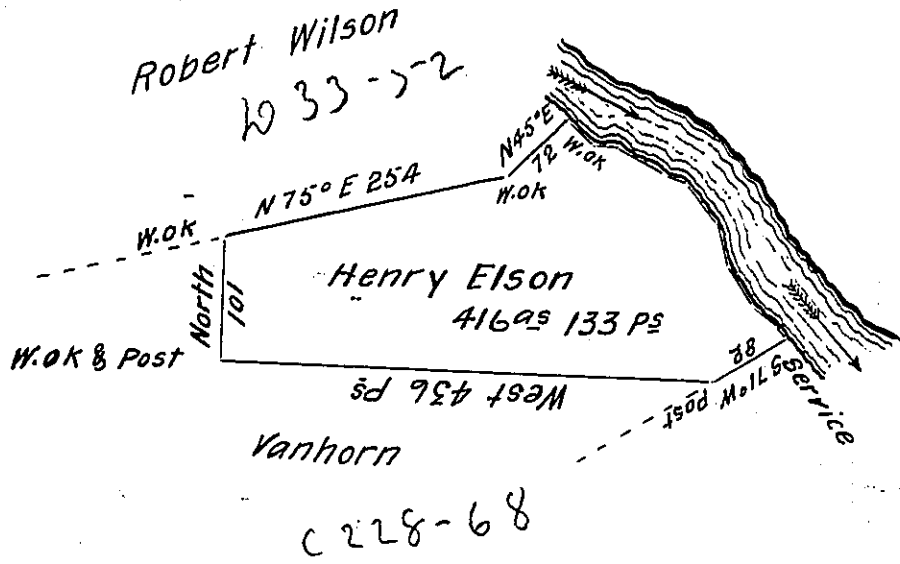


Courses and distances down French Creek
beginning a White Oak



S 55°	E 34
S 72 1/2°	E 14.8
S 71 1/4°	E 48
S 67 1/4°	E 18.4
S 28°	E 41.5
S 18°	E 36
S 37 1/2°	E 41
S 53 1/2°	E 16.2
S 60°	E 25.9
S 50°	E 22
S 51°	E 7 to a service
304.8	

In pursuance of a Warrant for 400^{acs} dated the 14th day of December 1801 was surveyed the 5th day of June 1802. the above described Tract of Land containing 416 Acres 133 ps and allowance of six per Cent for Roads &c. Situate in Fairfield Township in the County of Crawford

William McArthur Dy. Sr.

To Samuel Cochran Esquire
Surveyor General

IN TESTIMONY that the above is a copy of the original remaining on file in the Department of Internal Affairs of Pennsylvania, made conformably to an Act of Assembly approved the 16th day of February, 1833, I have hereunto set my Hand and caused the Seal of said Department to be affixed at Harrisburg, this fifth day of August 1904.

Loane P. Brown
Secretary of Internal Affairs.